

What's known about NPS

Matthew Dance M.A.

Overview

1. Context
 - Global
 - Alberta
2. Alberta NPS Emissions
3. Gaps
4. NPS Defined
5. Questions

1.CONTEXT

NASA Global 'Pollution' Map

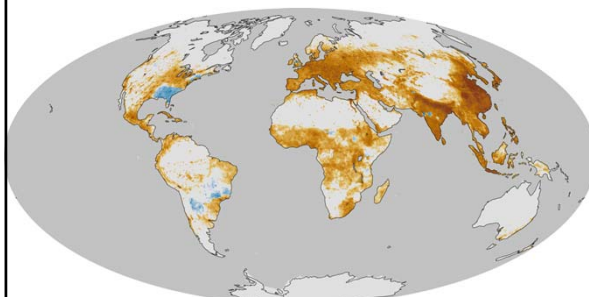
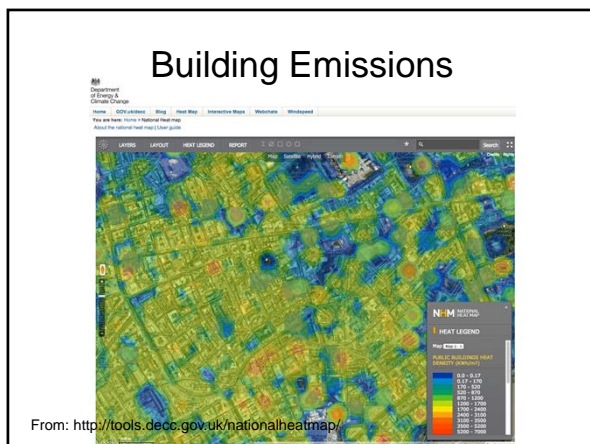
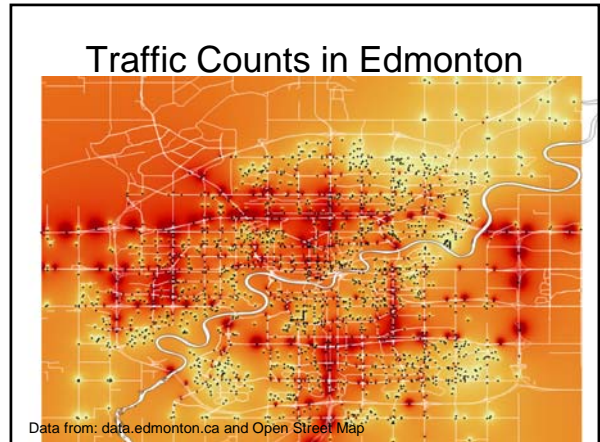
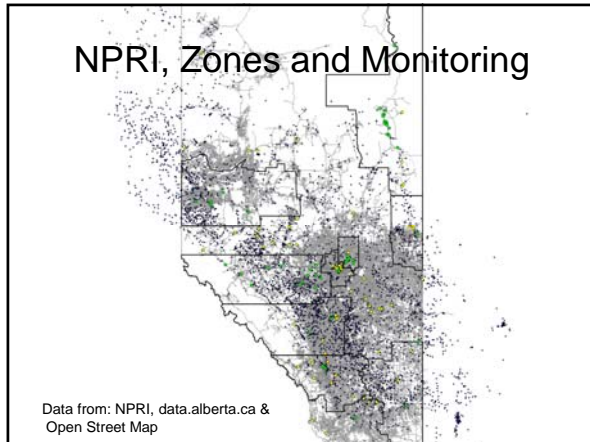
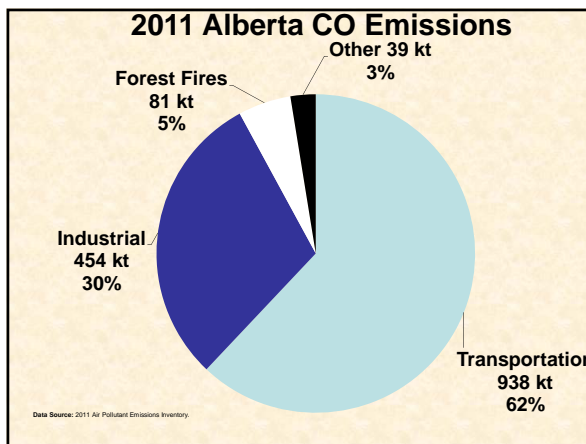
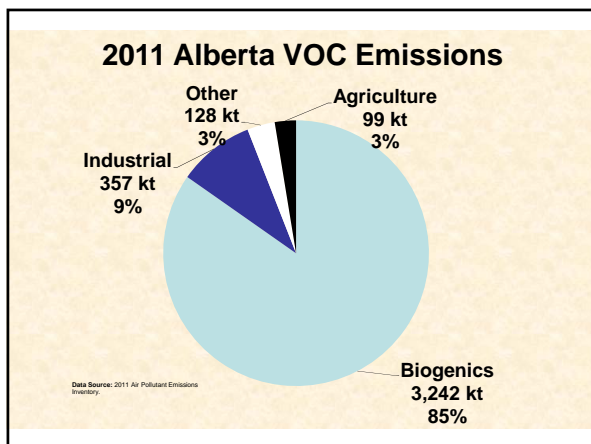
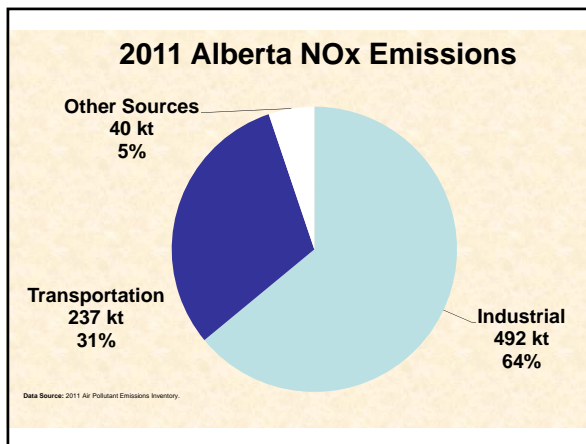
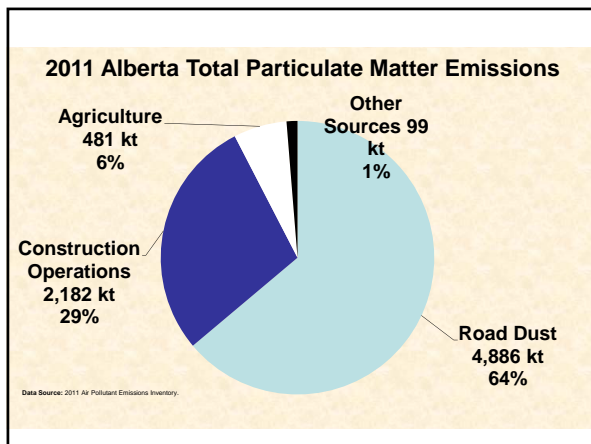
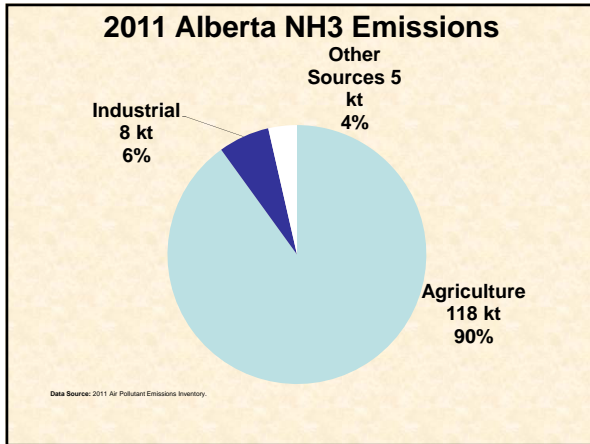


Image from: <http://earthobservatory.nasa.gov/>

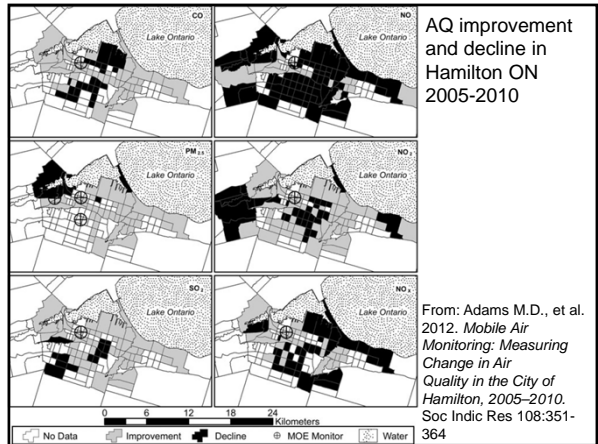


2.ALBERTA NPS EMISSIONS





3.GAPS



“Stationary monitoring indicated air quality improvement from 2005 to 2010, whereas mobile monitoring indicated areas that experience both improvement and decline...”

4.NPS DEFINED

Definition

Non-point sources are **aggregated** sources of air emissions, as opposed to individual identifiable sources of emissions (point sources). This aggregation is done because the emission sources are either too small and numerous, too geographically dispersed, or too geographically large to be estimated or represented by a single point.

Examples on NPS

| | |
|---|--|
| Residential Fuel Combustion (e.g. home heating); | Refined Petroleum Products Retail (gas stations); |
| Commercial Fuel Combustion (e.g. space and water heating); | Printing; |
| Residential Fuel Wood Combustion (e.g. fire places, wood burning stoves); | Structural Fires; |
| Transportation (e.g. on-road and off-road vehicles, air, rail, etc). | Surface Coatings; |
| Incineration (cremation, industrial, commercial); | Agriculture (animals, tilling & wind erosion, fertilizer application); |
| Cigarette Smoking; | Construction Operations; |
| Dry Cleaning; | Road Dust (paved and unpaved roads); |
| General Solvent Use; | Waste; |
| Meat Cooking; | Mine Tailings; |
| | Prescribed Burning; |
| | Biogenics (soils and plants); |
| | Forest Fires; etc. |

Matthew Dance
matt@matthewdance.ca
@mattdance

QUESTIONS?